

ADS Dental Lab Partial Metal Frame Denture Framework Fabrication

Basic Information

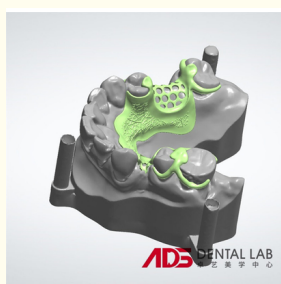
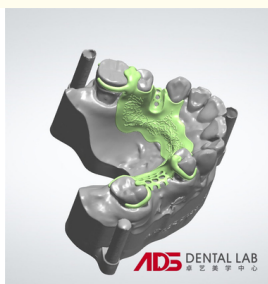


Product Specification

- Highlight:
ADS Dental Lab metal frame denture ,
metal frame denture Fabrication,
ADS Dental Lab metal frame partial denture



More Images



Product Description

Dental Metal Framework

A cast metal partial denture features a metal framework that attaches via clasps connected to crowns. While the metal frame is concealed by gum-colored acrylic plastic, the clasps may be visible when you smile. The strength of the metal provides high stability, requiring minimal repairs, making it an ideal long-term solution for patients.

Dental Metal Framework Fabrication Process Between Clinicians and ADS Dental Lab

Initial Impressions

The clinician takes full arch upper and lower impressions and a full arch bite registration.

Model and Frame Fabrication

ADS Dental Lab receives the case and pours the model accordingly.

Lab technicians fabricate the metal frame with a bite block. This step takes approximately 2.5 weeks due to the casting process.

Once the metal frame with bite block is made, the case is sent to the clinician for a try-in.

Metal Frame and Bite Block Try-In

The clinician verifies the accuracy of the metal frame and the bite block.

If the try-in is successful, the clinician sends the case back to ADS Dental Lab for metal frame setup.

Metal Frame Setup

ADS Dental Lab receives the case and begins working on the metal frame setup.

Once the frame setup is ready, the lab sends the case back to the clinician for a setup try-in.

Setup Try-In

The clinician receives the case and schedules a try-in with the patient.

If the setup try-in is successful, the clinician sends the case back to ADS Dental Lab for final finishing.

Final Finishing

ADS Dental Lab receives the case and proceeds with the final finishing of the metal frame.

Once the finishing is complete, the case is sent back to the clinician.

Final Delivery

The clinician delivers the completed denture to the patient.

If the patient approves the overall quality of the denture, they go home with a fully restored smile.



+8613430498390



info@chinaadsdentallab.com



adschinadentallab.com

Building 4, Hengguangyao Industrial Park, Yonghe Road, Fuyong, Shenzhen, China 518103